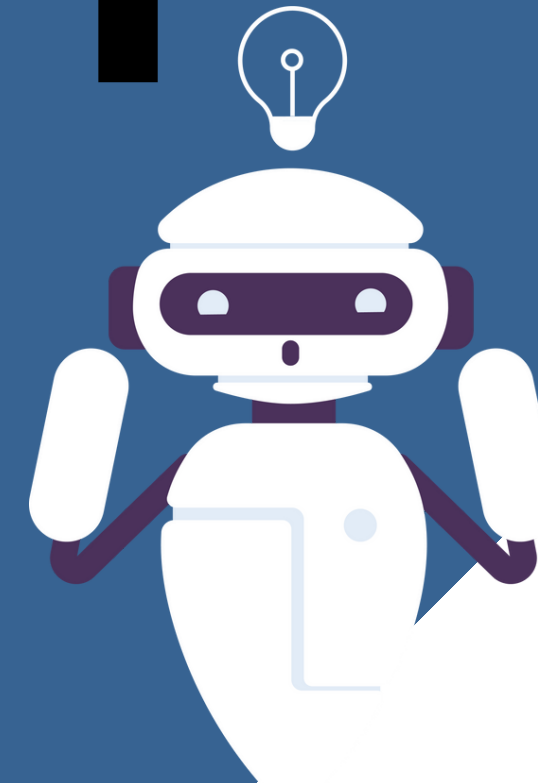


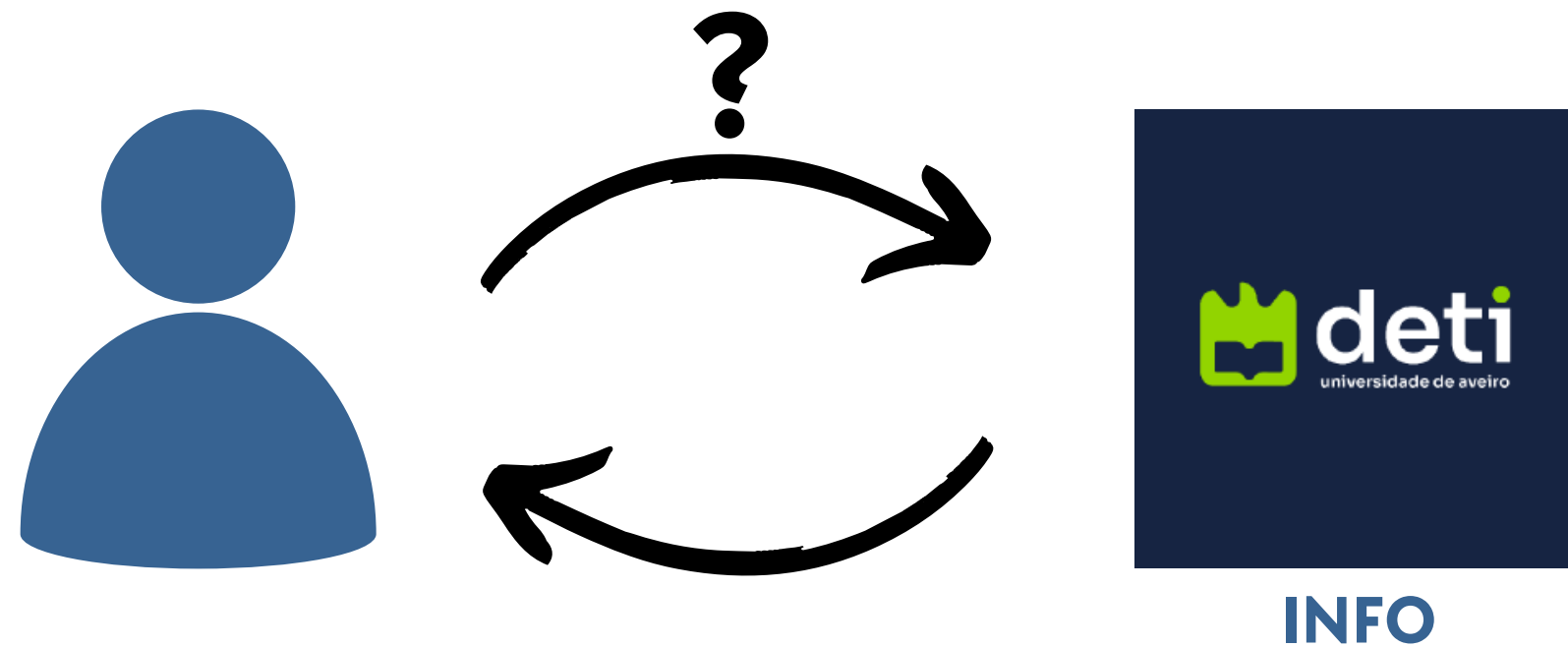


# DETIBOT



Grupo nº12  
Projeto nº13

# WHAT IS DETIBOT?

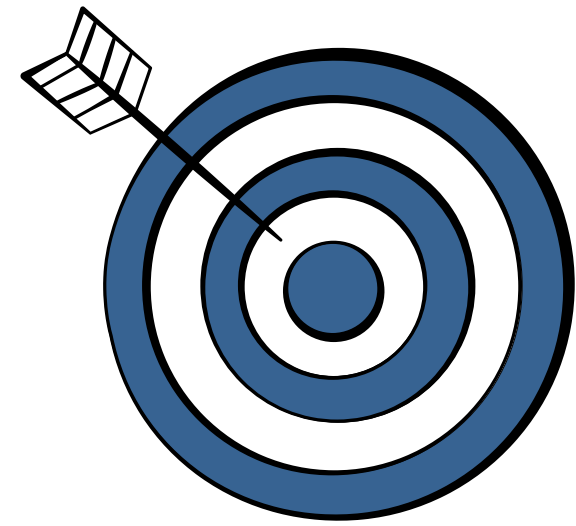


**Situation** – wide variety of sites, portals and communication services (e.g. discord, slack, etc) that contain different types of information.

**Problem** – too many different sources, information widely spread.

**Idea** – an agent that answers any question about the department correctly

# TARGET



to know about events, room locations, schedules, services

---

## STUDENTS

know of events, educational files, administrative contacts,  
research groups, and projects

---

## PROFESSORS

easy access to different DETI contacts

---

## STAFF

DETI presentation, demos, projects, and events open to the public

---

## VISITORS

# TEAM ROLES

A decorative graphic consisting of a horizontal line that starts from the left edge of the slide and ends under the 'TEAM ROLES' title. From the end of this line, a diagonal line extends upwards and to the right, ending in a solid dark grey circle.

**Inês Ferreira**

**Product Owner**

**Guilherme Lopes**

**Team Manager**

**Simão Antunes**

**Architect**

**Pedro Matos**

**DevOps**

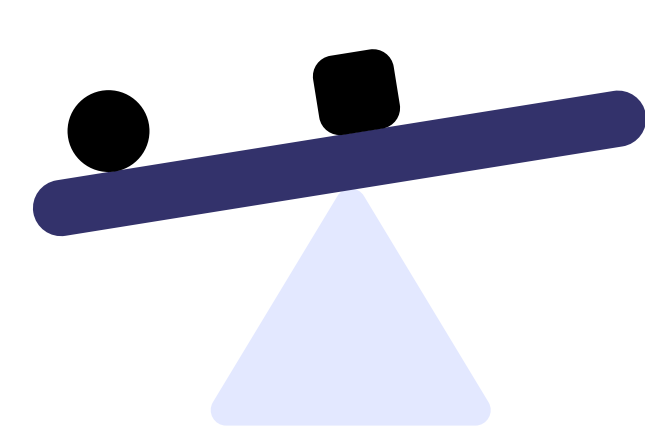
**Diogo Gaitas**

**QA Tester**

**Mário Antunes**

**Advisor**

# SWOT ANALYSIS



## Strenghts

## Weaknesses

### Internal

Natural interaction with user  
Encompasses lots of information

Dealing with fragmented information  
Dependency on other tech  
Prevent inadequate answers from agent

## Opportunities

## Threats

### External

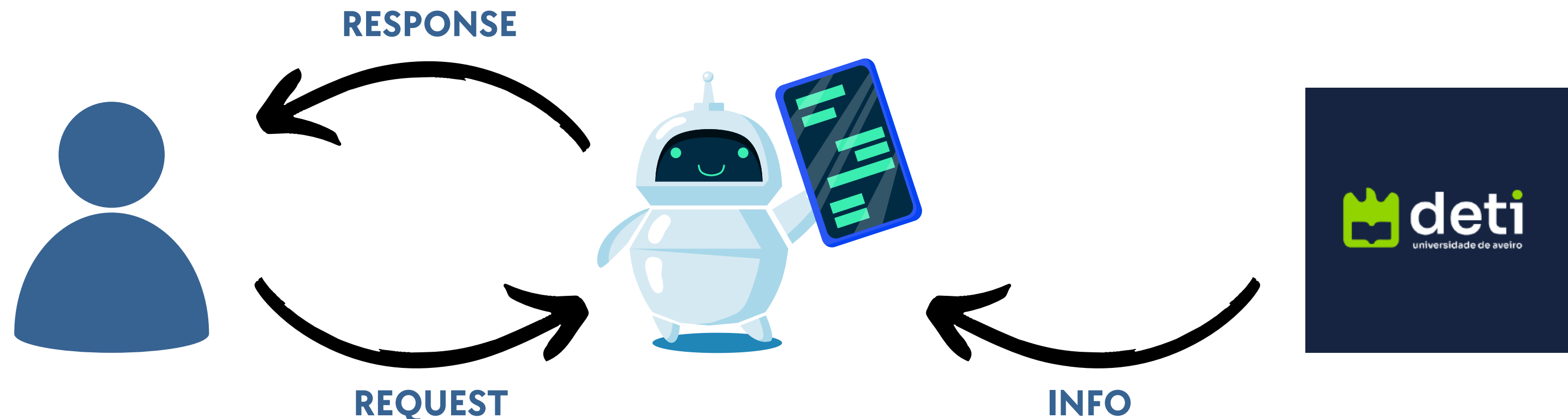
AI market in extention  
Using innovative technology to  
boost/rejuvenate DETI  
Taking advantage of the lack of centralized  
information

Difficulty  
acessing/updating/compartmentalizing  
information  
Difficulty in ensuring infrastructure

# DETI BOT-DEVELOPING

“This project aims to **develop a DETI Bot agent** that leverages both Large Language Models (LLMs) and Retrieval-Augmented Generation (RAG) **to monitor and index all relevant data sources pertaining to departmental activities**. The bot will offer diverse interfaces for the community to seamlessly interact with this information. “

from “Project planning tasks” slides



# KEY FUNCTIONALITIES

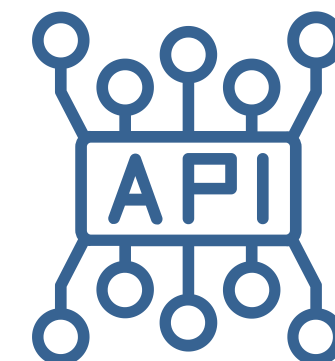
 **INFORMATION GATHERING FROM DIFFERENT DETI  
WEBSITES/DOCUMENTS**



 **OPTIMIZED INFORMATION INDEXING**



 **UNIFIED API WITH ACCESS TO MULTIPLE FRONT-  
END POSSIBILITIES (WEB PAGE, IM BOTS)**

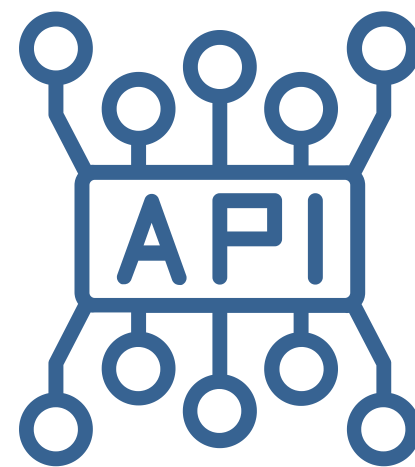


# PLANNING



**Database**

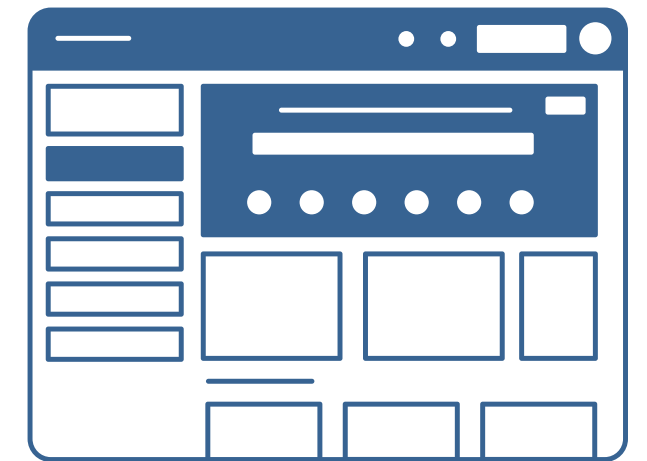
**RAG**



**API**



**DETI's info**



**Frontend**



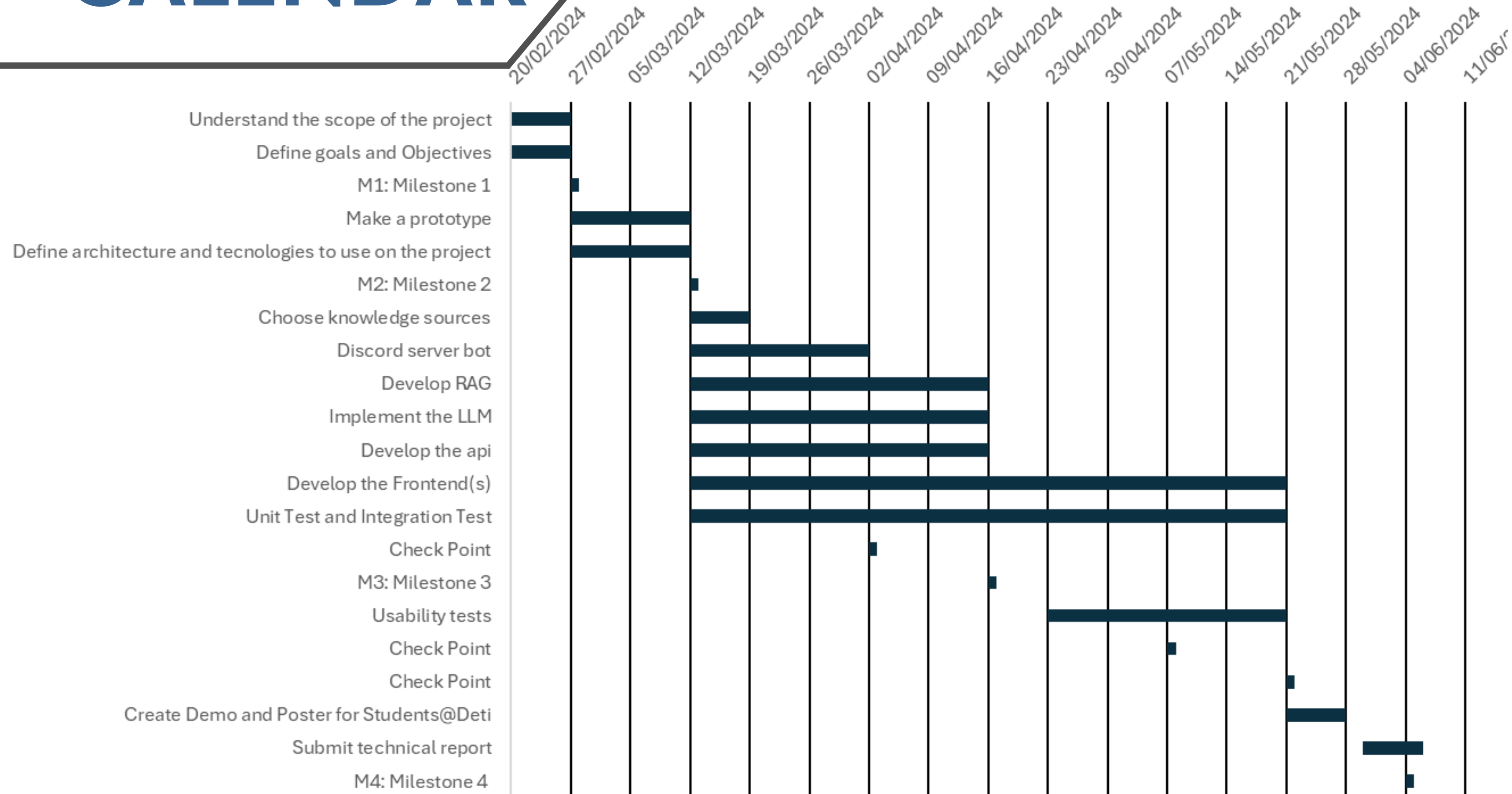
# QA TESTING

- Unit testing certain smaller aspects of the code throughout the development process .
- Integration testing throughout the development process.
- Evaluating user experience by crowd sourcing answers.



# CALENDAR

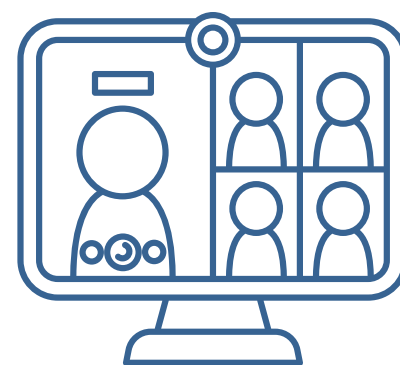
## Project Schedule



# COMMUNICATION



**Weekly in-person meetings**



**Online chatrooms**



DetiBot

## Project Stages

### Milestone 1: Planning

Lorem ipsum dolor sit amet, consectetur adipiscing elit. Proin eget arcu sit amet est imperdiet pulvinar. Nulla facilisi.